



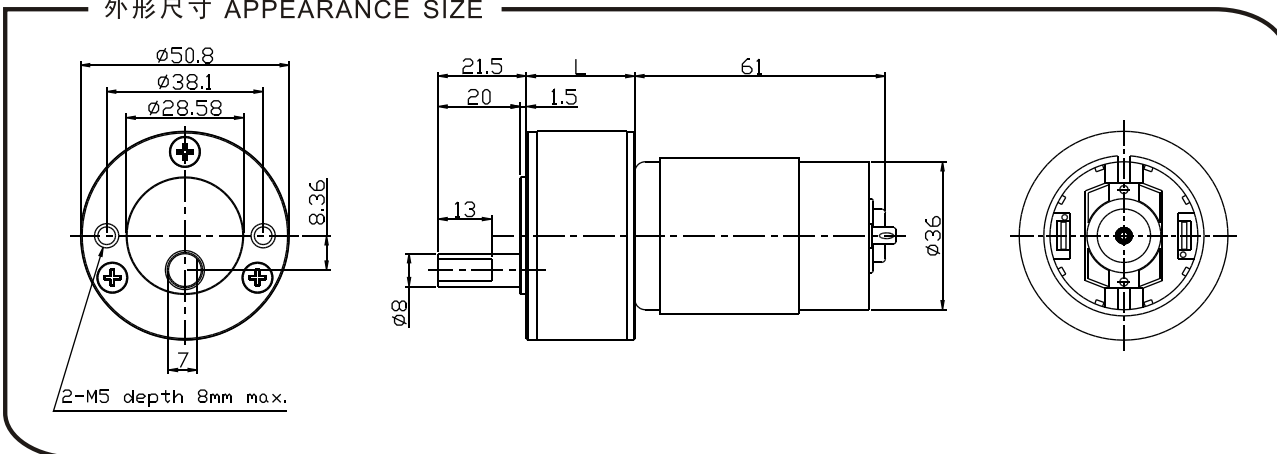
电压/Main voltage: 3VDC、6VDC、9VDC、12VDC、24VDC、36VDC

用途/Typical applications: 垃圾处理器、自动贩卖机、蠕动泵子、望远镜、自动门、电视广告、医疗器械、ATM银行系统、家用电器、执行器、办公设备 Garbage disposers, Slot machine, Peristaltic pump, Angular telescope, Automatic door, Electric advertising, Medical equipment, ATM bank automatic system, Household appliances, Automatic actuator, Office equipment.

重量/Weight: 450~500g/pcs(approx)

包装外形尺寸/Packing details: CTN size: 34X31XH15cm 20pcs/CTN G.W.13kgs

外形尺寸 APPEARANCE SIZE



齿轮箱数据 Gearbox data

减速箱级数 Number of stages	2、3 减速比 Stages reduction	4、5 减速比 Stages reduction	6 减速比 Stages reduction
减速比 Reduction ratio	7.2、13.3; 29、53	116、213; 464、853	1856、3415
齿轮箱长度 Gearbox length "L" mm	26.4	30.2 33.9	37.7
最大运转力矩 Max. Running torque	10kgf.cm	30kgf.cm	30kgf.cm
最大破坏力矩 Max. Gear breking torque	30kgf.cm	75kgf.cm	75kgf.cm
最高齿轮效率 Max. Gearing efficiency	81%; 73%	65%; 59%	53%

其它减速比请致电或邮件给我司技术部 Other reduction ratio please telephone or e-mail to our engineering department.

马达参数 Motor data

马达型号 Motor Model	电压 Rated Volt. V	空载 No load		负载 Load torque				堵转 Stall torque	
		电流 Current	转速 Speed	电流 Current	转速 Speed	扭矩 Torque	输出功率 Output power	扭矩 Torque	电流 Current
		mA	r/min	mA	r/min	gf.cm	W	gf.cm	MA
RG50M555123000	12	≤140	3000	≤800	2200	150	3.3	600	3000
RG50M555124500	12	≤220	4500	≤1200	3300	220	7.2	880	4800
RG50M555126000	12	≤350	6000	≤2000	4500	300	13.5	1200	6000
RG50M555243000	24	≤70	3000	≤400	2200	150	3.3	600	1600
RG50M555244500	24	≤110	4500	≤600	3300	220	7.2	880	3000
RG50M555246000	24	≤180	6000	≤1000	4500	300	13.5	1200	4000

- 这张表格只列出出部分电机参数，想了解更多具体参数请参照95页。
- This table lists some motors parameters, otheers please refer to specific parameters of Page 95.
- 马达和齿轮箱装配成减速电机后输出扭矩 = 马达扭矩X减速比X齿轮效率;输出转速 = 马达转速 / 减速比。
- After connecting motor and gearbox which is named gearmotor the output torque: motor torque X reduction ratio X gearing efficiency; output speed: motor speed/reduction ratio.